

Mechanical Service Tools

October 2020

Tools & Consumables Database:

<https://parts.cummins.com/mst-entry/main>



Group Email*:

CumminsMechanicalServiceTools@cummins.com

**To subscribe or unsubscribe to a direct emailed monthly update, email us.*

[Warranty Communication Self-Serve Subscription Form](#)

**To subscribe to this and other service/warranty related newsletters, please sign up for the ServiceLine Newsletter via the link above.*

Electrical Connector Database:

<https://quickserve.cummins.com/ecdb/index.html>

Tools Catalog on QSOL:

<https://qsol2.cummins.com/qs3/portal/manualviewer.html?path=/qs3/pubsys2/xml/en/outlines/3377710.html>

Disclaimer

The information in this packet does not carry any classification, therefore it is suitable for distribution to anyone that has interest in genuine Cummins service tools.

The information was deemed correct to the best of our knowledge at the time of publication.

Any tool availability dates are estimates and subject to change without notice.



Updates coming to the parts.cummins.com service tool page

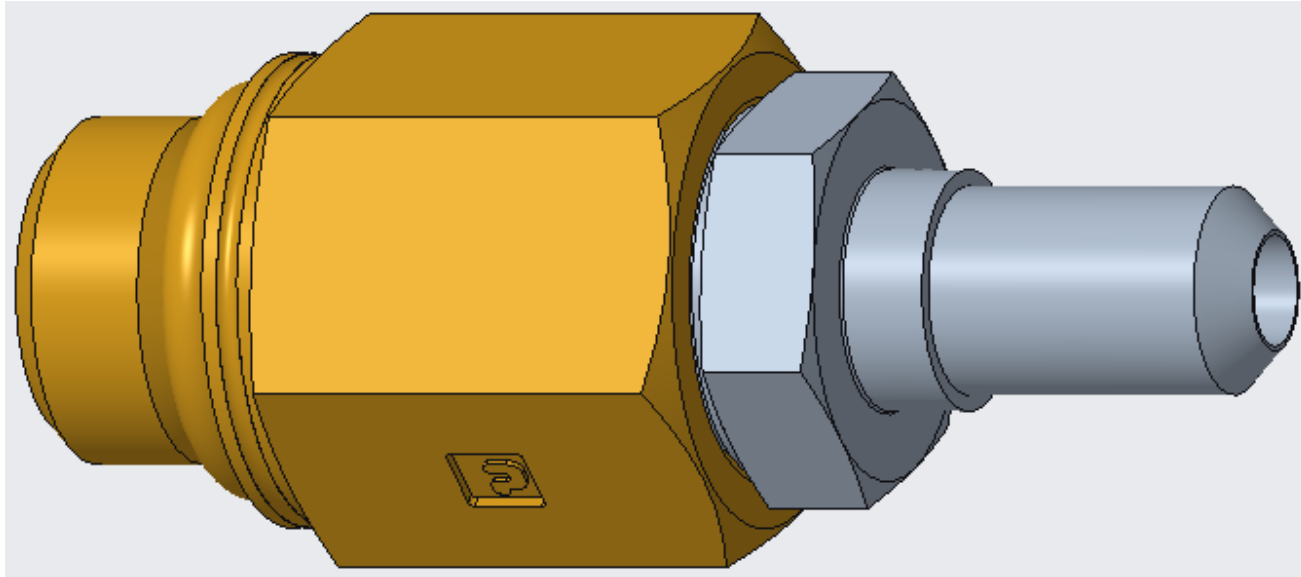
- Update launching in mid-October will cover several areas:
 - Multi-view & 3D rotatable tool graphics will be available
 - We are working through these pretty quickly but not all tools will have graphics right away
 - Improvements to downloadable list Excel documents
 - Better data display
- The information in the connector database **is moving** to parts.cummins.com
 - Searching for connector repair items will have the same feel as searching for tools or consumables in parts.cummins.com
 - Connectors will have 3D graphics like the rest of the tools
 - A “banner” will be put up on the old connector database website advising users to go to the parts.cummins.com site
 - Move will take place in mid-October (same timing as above)
 - Once the data move is completed, the old connector database website will be deleted



New Tools Available Soon For Engines 15L and Smaller

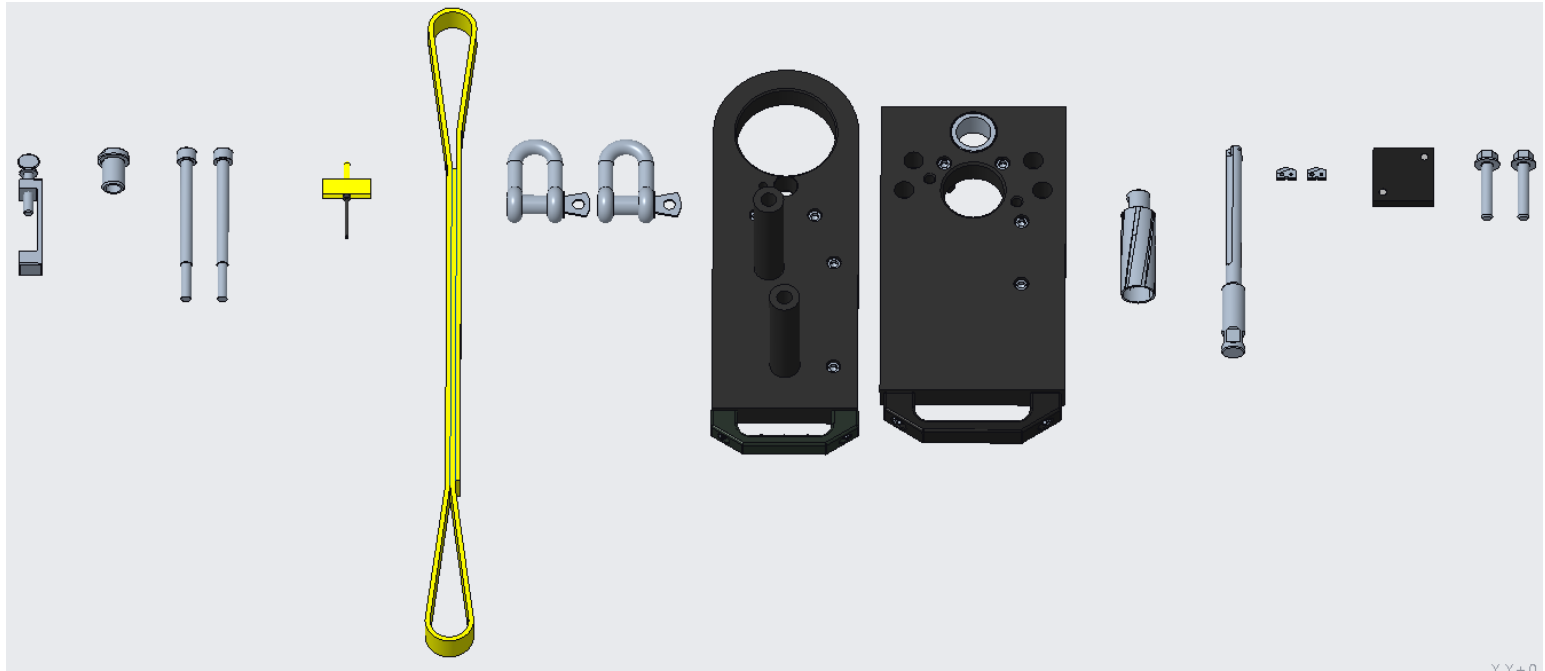


5572295 – Turbo Coolant Passage Leak Test Fitting



- This fitting is used with **but is not included** in kit PN 5299505 to test the turbocharger coolant passage for leaks.
- The kit includes a fitting for an M14 o-ring port, but did not include one for an M16 o-ring port, which this tool provides.
- Recommended for many B-series engines.
- Due to be available in February 2021.

5572784 - - Crankshaft Adapter & Gear Removal Kit



- This kit is designed to drill and split the crankshaft adapter and the crankshaft gear found on all 15L engines to allow component removal.
- The kit is designed to work with specific magnetic base drill presses (see next slide).
- This kit obsoletes and supersedes kit 4918530.
 - Kit 4918530 set-up & drilling time = **8 hours** 😞
 - Kit 5572784 set-up & drilling time = **1 hour** 😊
- New service procedure in process.
- Procedure featured in Cummins Virtual College course 3273, X15 Front Gear Train with Doweled Idler Assemblies
- Recommended for all 15L engines.
- Due to be available in February 2021.

5572871 & 5572872 - - Magnetic Base Electric Drill Press

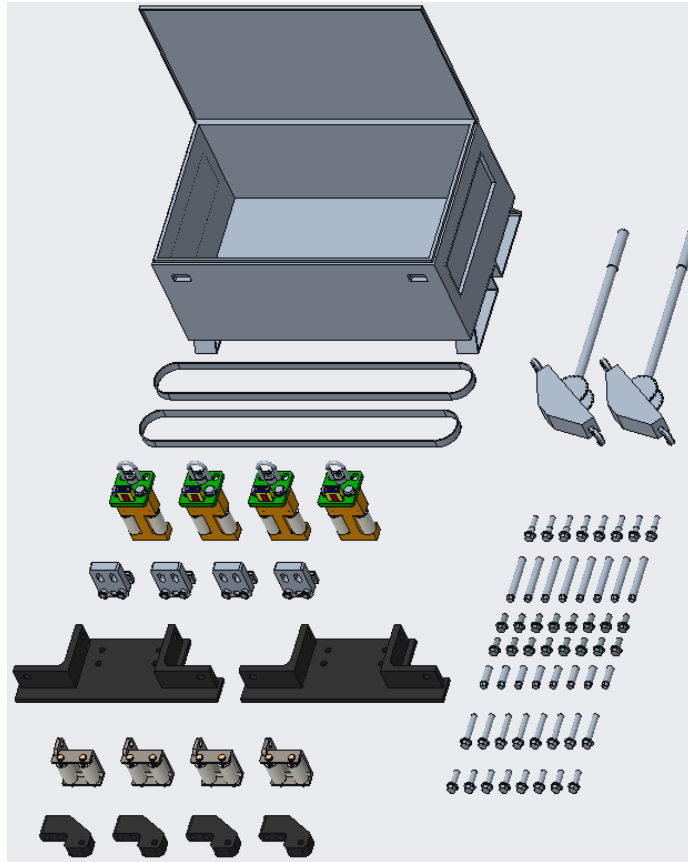


- These magnetic base electric drill presses are used with kit 5572784 for crankshaft adapter & gear drilling on 15L engines.
 - 5572871 is 120V & 60 Hz
 - 5572872 is 220V & 50 Hz
- Substitution of other drill presses is not recommended for use with kit 5572784.
- Recommended for all 15L engines.
- Due to be available in February 2021.

New Tools Available Soon For Engines Larger Than 15L



5573094 – 60Hz Alternator & Gearbox Rollback Kit



- This kit is used to roll back the alternator and gear box to allow access to the rear of the engine for service.
- The kit also includes everything needed to roll the components forward again as well as to align them to the engine.
- Recommended for HSK78 G CM2358 K129 powered gensets with **60Hz alternators & speed change gearboxes**. Use kit 5572567 for gensets equipped with 50Hz alternators.
- Due to be available in February 2021.